

---



# Design for Food

Sustainable Saanich

Thinking Outside the Green Building



Janine de la Salle

Director of Food System Planning

Holland Barrs Planning Group

September 21<sup>st</sup> 2007

---

---



# Introduction



# Goals for Today

- Share ideas
- Create interest in designing for food
- Identify ways to move ahead with designing for food

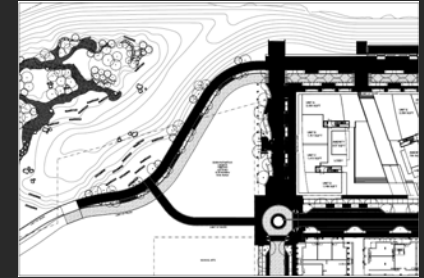


# Food in the spotlight

- Focus on health
- Link to climate change;
- Growth pressure on agricultural land;
- Popular culture trends around food;
  - Sustainable dining;
  - 100 mile diet.



# Approach



Increasing urbanization and densification

Urban planning with a focus on livability

Design led approach to food

# What does *design for food* mean?



- “Hard wiring” to provide for food growing areas and related food activities
- Program design

# BENEFITS OF DESIGNING FOR FOOD

## Social

- community development and capacity building,
- therapy and recreation,
- crime reduction,
- addiction rehabilitation,
- education around healthy diets,



# BENEFITS OF DESIGNING FOR FOOD- Ecological/Infrastructure



- Open space management;
- Storm water management,
- Habitat creation, increase urban biodiversity;
- Waste diversion and composting.



# BENEFITS OF DESIGNING FOR FOOD

## Economic



- Marketing focused on health and sustainability;
- Increasing property values;
- Investment in local economies.

---



# Design Principles and Considerations



# Design Principles



- Multi-use
- Think-like-a-gardener
- Flexibility & adaptability
- Visibility and Appearance
- Demonstration

# Technical Considerations

- Soil type and depth
- Drainage
- Wind exposure
- Access
- Water sources and uses
- Size and dimension of beds
- Orientation/exposure
- Materials
- Supporting structures



# Management Considerations

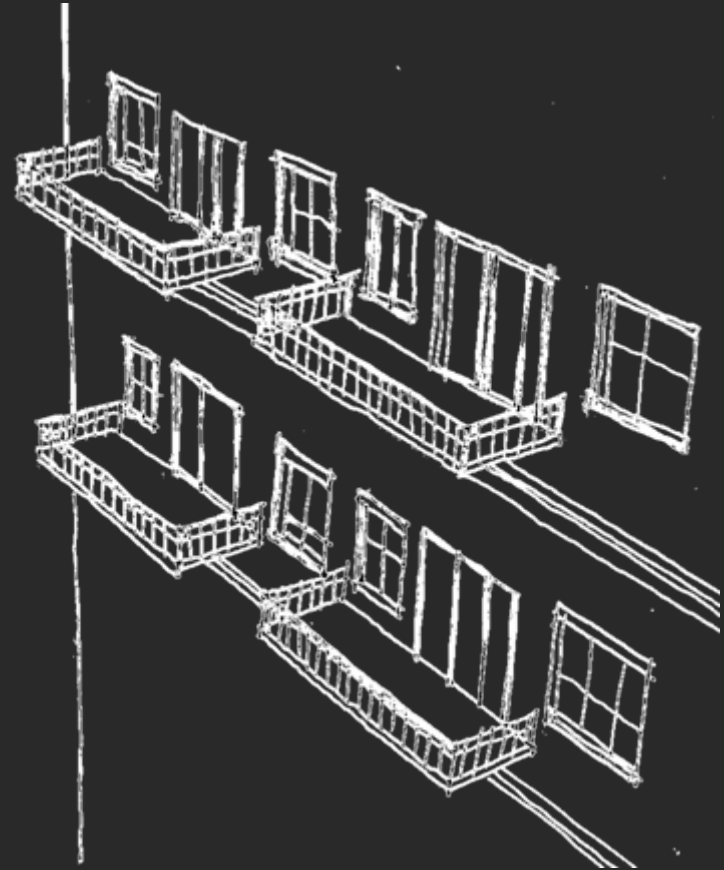
- **Who and how will UA spaces be managed?**
  - Requires local solutions;
  - Working with strata councils;
  - Neighbourhood organizations and NGOs; and
  - Partnerships with landscape caretakers.



Solaire Green Roof Garden in Battery Park

# Spaces where food can be planned/designed:

- Rooftops, balconies
- Around buildings
- Inside buildings
- Courtyards
- Parks
- Plaza
- Waterfront
- Streets
- Schools and Community Centres
- Community Demonstration Garden

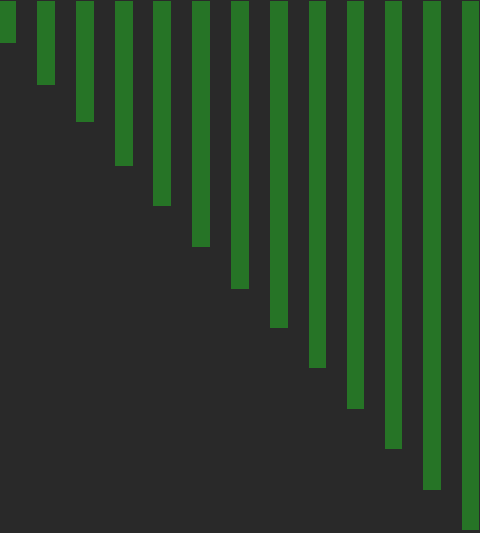


# Design Considerations

- Intensive and extensive green roof for gardens;
- Espalier fruit/nut trees;
- Arbour with vines;
- Cold frames;
- Bee hives;
- Themed Gardens;
- Living/green wall;
- Public art & ornamental structures;



---



# Local Examples of Designing for Food

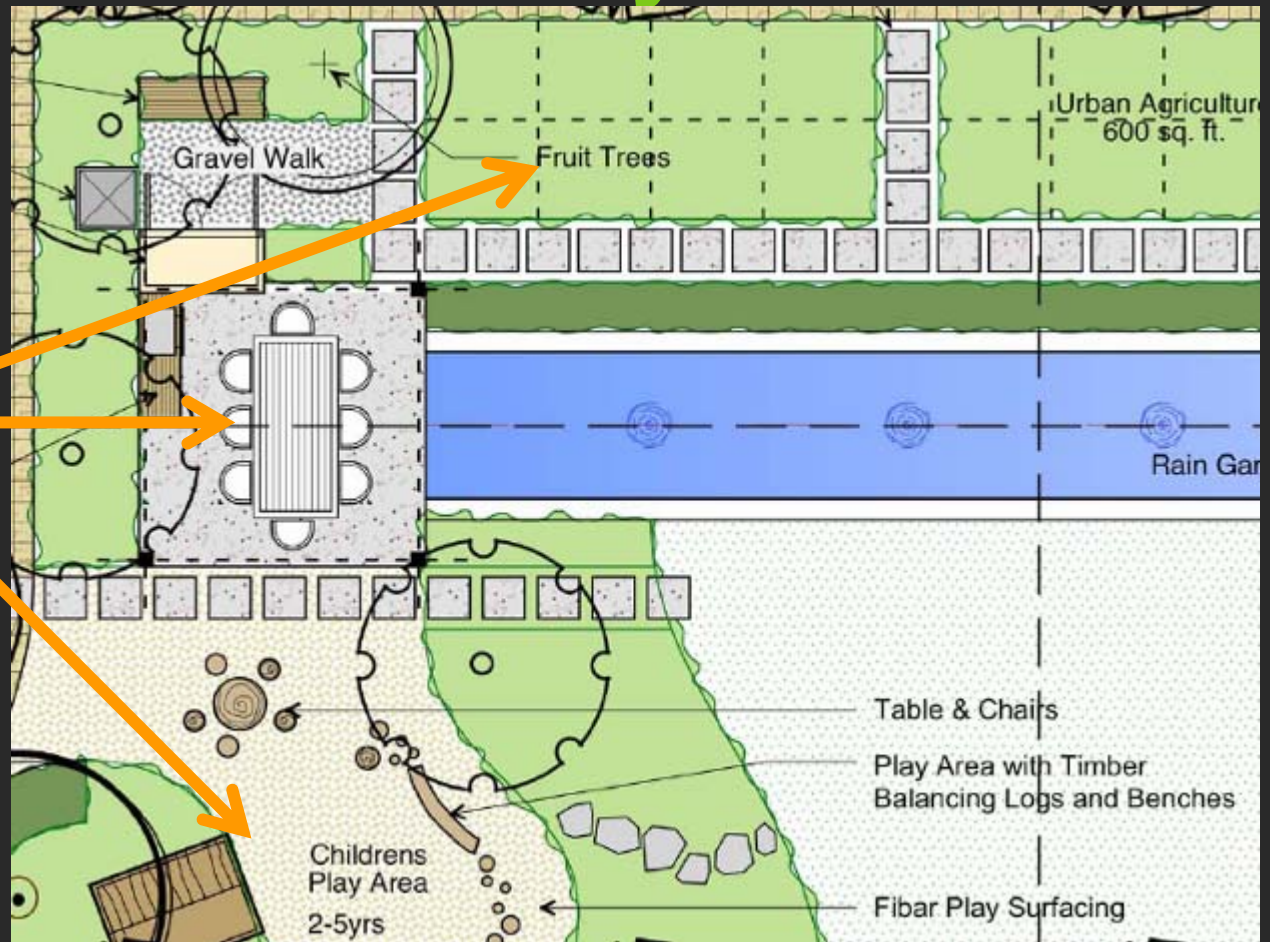




# Southeast False Creek



# SEFC Multi-functionality



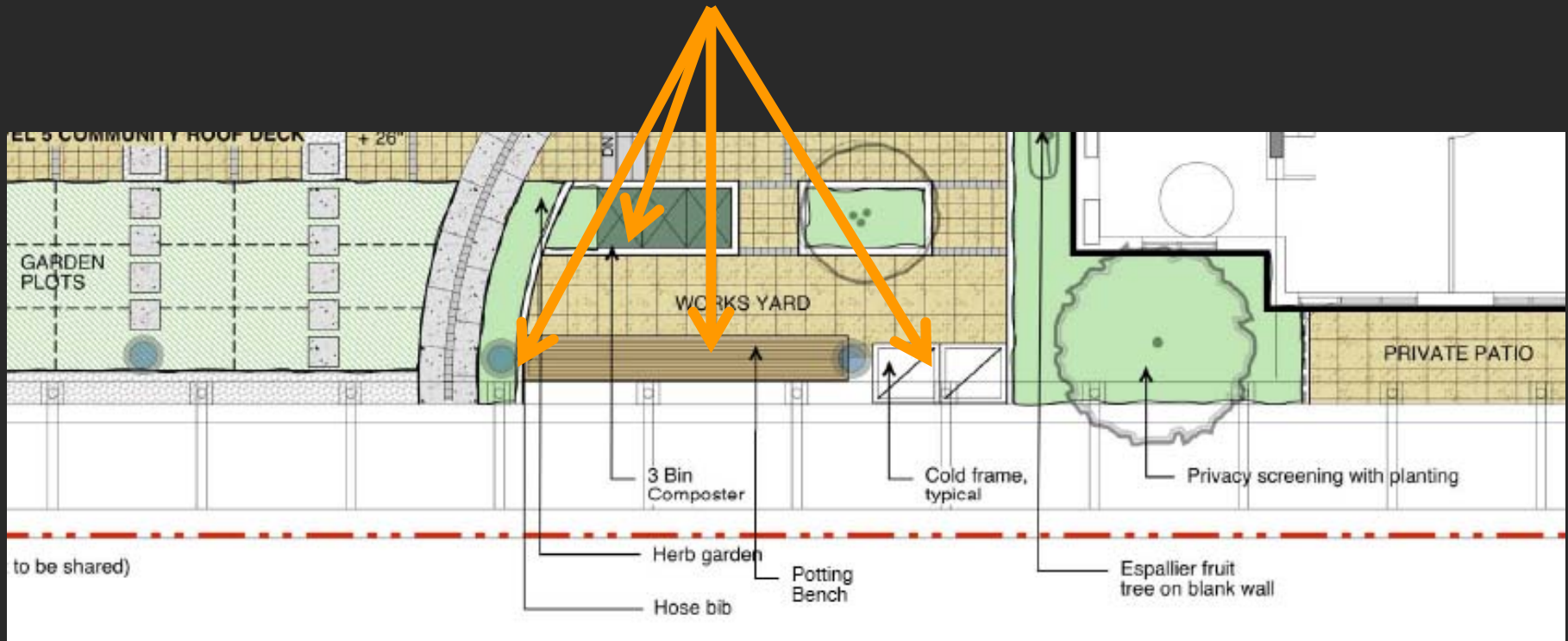
Growing areas,  
community table,  
Children's play  
area

Site Plan Courtesy of Durante Kreuk  
Landscape Architects



# SEFC Supporting Structures

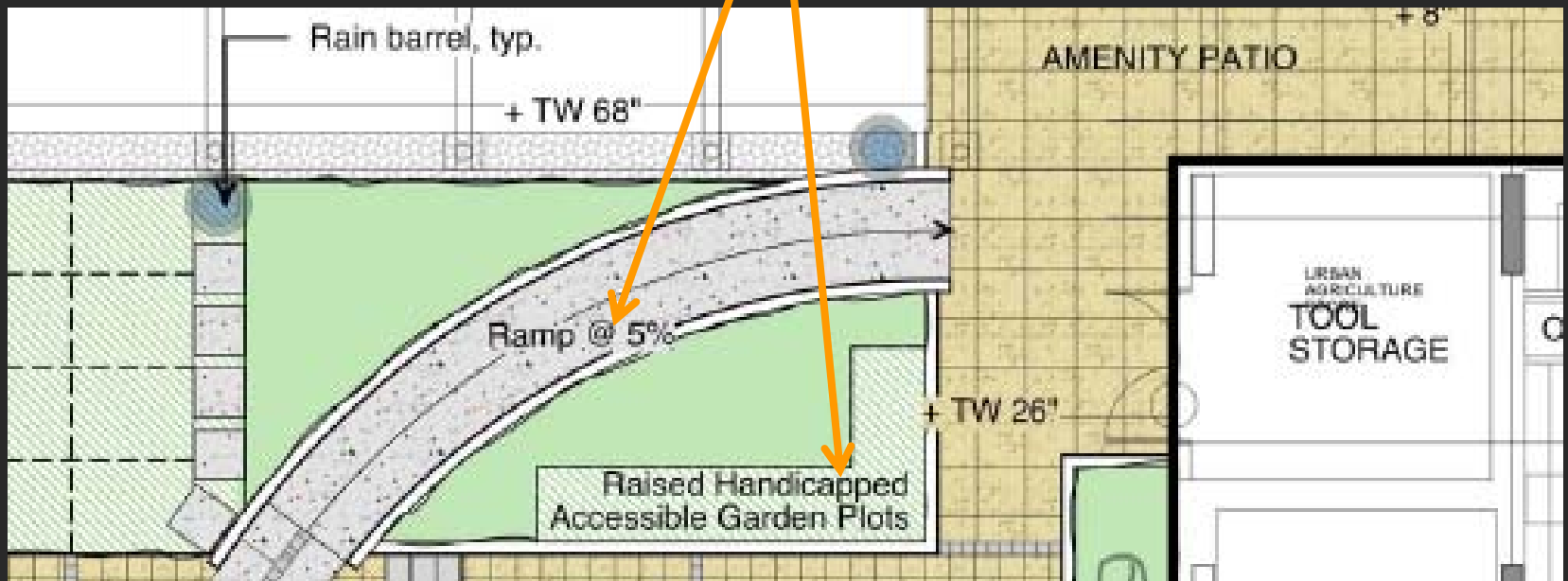
Hose bib, composter, potting bench, cold frame



Site Plan Courtesy of Durante Kreuk  
Landscape Architects

# SEFC Accessibility

Ramp, raised beds

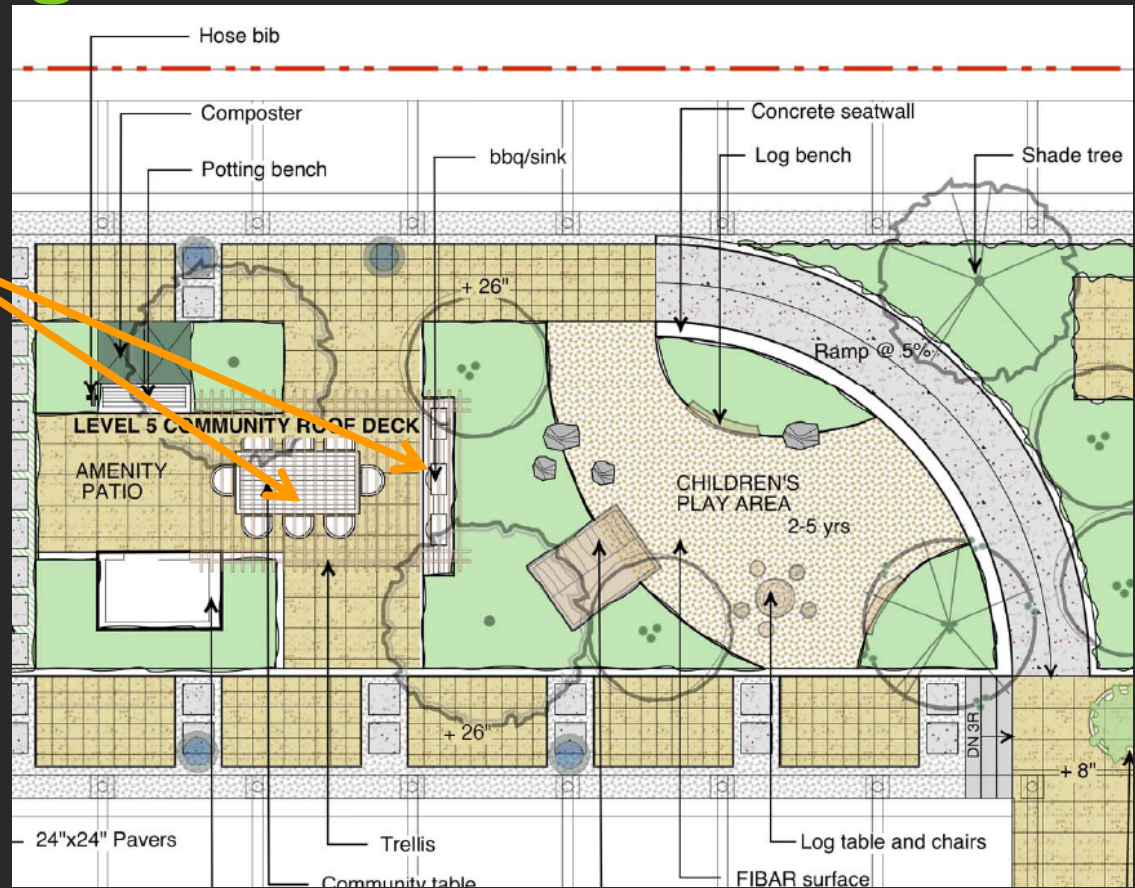


Site Plan Courtesy of Durante Kreuk  
Landscape Architects

# SEFC

## Space for preparing and sharing food

BBQ, Sink, Community table,



Site Plan Courtesy of Durante Kreuk Landscape Architects

# Langford

## Westhills Green Community Master Plan (2007)



- Planned dedication of lands for community agriculture.
- These lands will be planted with appropriate fruit trees and will be available for community allotment gardens (Pg 27)

# Langford Community Agriculture areas

- 3 Community agriculture areas
- Westhills is a
  - residential development (5000+ unit mixed use community) and
  - LEED ND project.
- Food growing and associated activities have been identified as important to sustainability of the project.



# Fresia



- Voluntary
- Plots sold separately from units
- Plots are available for approx 30% of units
- Has an associated amenity room with lockers





# Fresia

## High density context



# Fresia Multi-use





# Fresia Container design



---



# Policies and Guidelines to Support Designing for Food



# POLICIES & GUIDELINES

## LEED ND- Option 1

- Neighbourhood farms and gardens



# POLICIES & GUIDELINES

## LEED ND- Option 2

- Community supported agriculture



# POLICIES & GUIDELINES

## LEED ND- Option 3

- Proximity to farmers market



# POLICIES & GUIDELINES

## Amenity Contributions

- In large projects food growing areas can be considered in negotiations
- Discussion point: Can food growing areas be considered an amenity?





# POLICIES & GUIDELINES

## Urban Agriculture Guidelines

- City of Vancouver
- Consultation process
- Is specific to allotment plots and edible landscaping



# POLICIES & GUIDELINES

## Urban Agriculture Guidelines

- **Addresses the following topics**
  - Siting and Access
  - Co-locating with Other Amenities
  - Number and Size of Garden Plots
  - Design of Garden Plots
  - Support Facilities
  - Edible Landscaping
  - Stewardship



---



# Cool stuff





# LEADING EDGE Center for Urban Agriculture



Source: Mithun Architects  
[http://www.treehugger.com/files/2007/09/mithun\\_architec.php](http://www.treehugger.com/files/2007/09/mithun_architec.php)

# Green Walls- Indoor



# Green Walls- Outdoor



---



# Green Walls- Outdoor



# Sooke Harbour House Herb and Veggie Growing





# Sooke Harbour House- Composter



---



# Sooke Harbour House Cold Frames



# Next Steps- How to start designing for food

- Internal workshops on how to design for food;
- Design charrettes;
- Food strategies;
- Public education.



# Conclusion



- Food is a key piece of the sustainability challenge;
- Designing for food enhances multiple objectives;
- Designing for food is easy.

---



# Questions & Discussion





**Thank-you!**

[idelasalle@hollandbarrs.com](mailto:idelasalle@hollandbarrs.com)

[www.hollandbarrs.com](http://www.hollandbarrs.com)

---